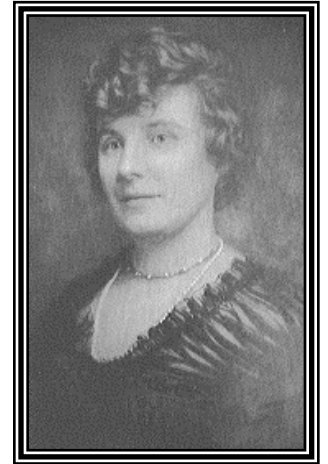


2008 Grand Bethel Essay Competition

The theme to which you will write is:

**"What would you do to change *your* world,
the way that Ethel T. Wead Mick changed
hers?"**



Did you know that our founder, Ethel T. Wead Mick was a progressive, positive-thinking woman? Wow, just imagine creating a new organization for young ladies! Think of how her thoughts and actions affected the world in which she lived. How has she affected your life?

Take a little time to reflect on Mrs. Mick and then think about how you can make a difference in your world, too.

I thought you might like to see these websites for some historical information on "Mom" Mick: <http://www.jdicurator.org> and <http://www.iojd.org>

The rules and the entry form are available from your Bethel Guardian or can be found on our California Job's Daughters website: www.caiojd.org. Please read the rules very carefully and follow all of them. I certainly don't want to have to put your essay in the "Sorry – Disqualified: didn't follow the rules" pile.

All entries must be received or post marked *no later than Thursday, May 1st* – seriously!! - of course earlier is okay.

I'm anxious to read your thoughts and to share them with the judges. The Daughter with the highest overall score will even have the opportunity to read her essay at Grand Bethel!

Good luck!

Ms. Delma Davis, PHQ PBG Bethel No. 129, San Jose
Chairman, 2008 Essay Competition
(510) 651-5541
delmadavis@hotmail.com (for questions only; no electronic entries)

Mail completed entries by Thursday, May 1 to:
Ms. Delma Davis 41555 Patton Terrace Fremont, CA 94538-4189